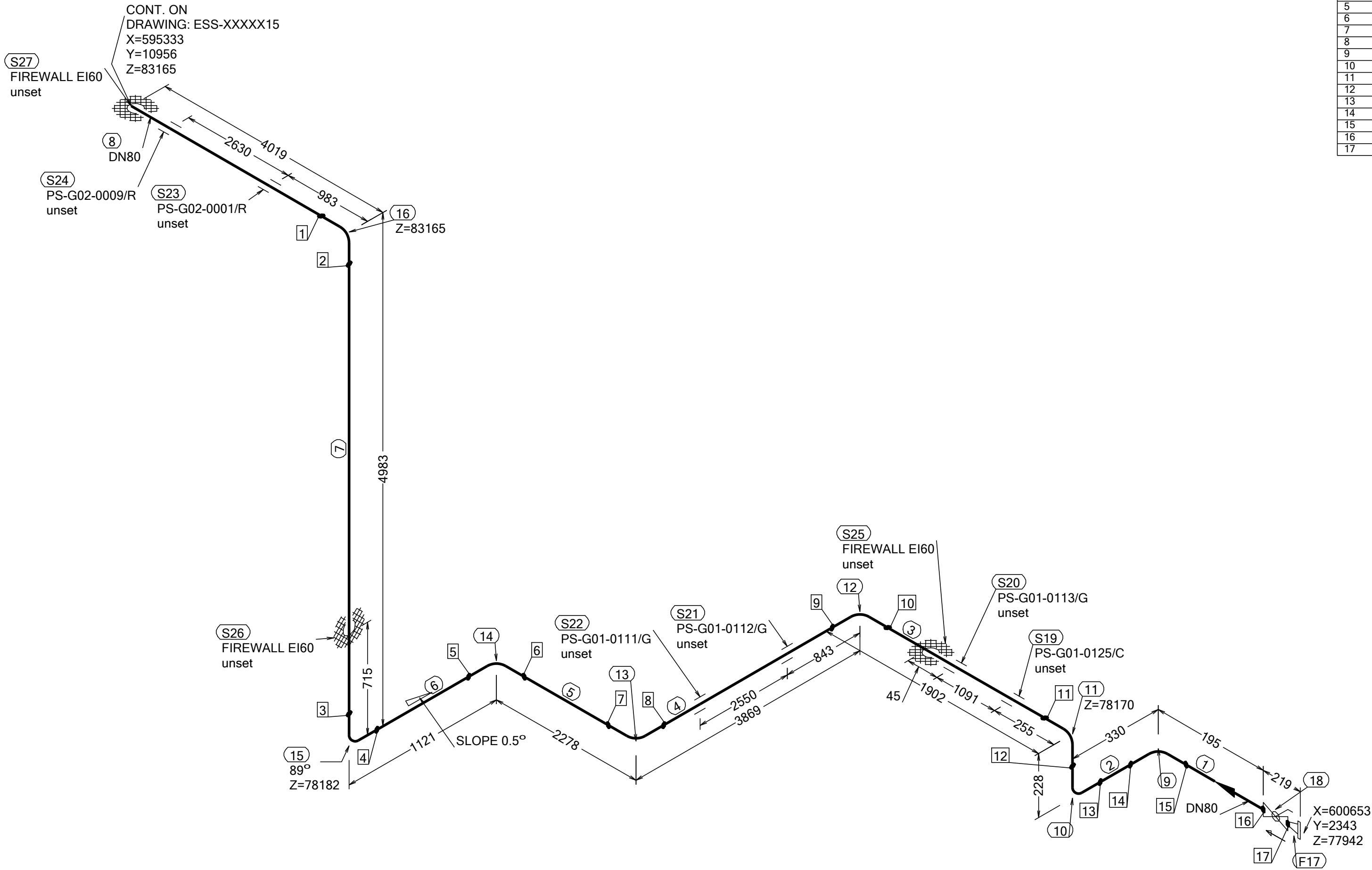


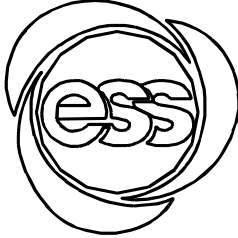
N (Y)



WELD	WPS
1	
2	
3	
4	
5	
6	
7	
8	
9	
10	
11	
12	
13	
14	
15	
16	
17	

FABRICATION MATERIALS					
PT NO	COMPONENT DESCRIPTION	DN	MATERIAL	QTY (mm)	REMARKS
PIPE					
1	PIPE, SS-EN 10217-7, TC1, 88.9x2.0	80	EN 1.4404	81	
2	PIPE, SS-EN 10217-7, TC1, 88.9x2.0	80	EN 1.4404	102	
3	PIPE, SS-EN 10217-7, TC1, 88.9x2.0	80	EN 1.4404	1674	
4	PIPE, SS-EN 10217-7, TC1, 88.9x2.0	80	EN 1.4404	3641	
5	PIPE, SS-EN 10217-7, TC1, 88.9x2.0	80	EN 1.4404	2050	
6	PIPE, SS-EN 10217-7, TC1, 88.9x2.0	80	EN 1.4404	894	
7	PIPE, SS-EN 10217-7, TC1, 88.9x2.0	80	EN 1.4404	4756	
8	PIPE, SS-EN 10217-7, TC1, 88.9x2.0	80	EN 1.4404	3905	
FITTINGS					
9	ELBOW 90, TYPE 3D, SS-EN 10253-4, TYPE A, 88.9x2.0	80	EN 1.4404	1	
10	ELBOW 90, TYPE 3D, SS-EN 10253-4, TYPE A, 88.9x2.0	80	EN 1.4404	1	
11	ELBOW 90, TYPE 3D, SS-EN 10253-4, TYPE A, 88.9x2.0	80	EN 1.4404	1	
12	ELBOW 90, TYPE 3D, SS-EN 10253-4, TYPE A, 88.9x2.0	80	EN 1.4404	1	
13	ELBOW 90, TYPE 3D, SS-EN 10253-4, TYPE A, 88.9x2.0	80	EN 1.4404	1	
14	ELBOW 90, TYPE 3D, SS-EN 10253-4, TYPE A, 88.9x2.0	80	EN 1.4404	1	
15	ELBOW 90, TYPE 3D, SS-EN 10253-4, TYPE A, 88.9x2.0	80	EN 1.4404	1	
16	ELBOW 90, TYPE 3D, SS-EN 10253-4, TYPE A, 88.9x2.0	80	EN 1.4404	1	
FLANGES					
17	FLANGE WN, SS-EN 1092-1, TYPE 11, PN16	80		1	
VALVES / IN-LINE ITEMS					
18	WORCESTER BALL VALVE BW, A599-666TTTZ-BWJ DN80	80	EN 1.4404	1	

ERECTION MATERIALS					
PT NO	COMPONENT DESCRIPTION	DN	MATERIAL	QTY (mm)	REMARKS
SUPPORTS					
19	ESS Atta	80		1	
20	ESS Atta	80		1	
21	ESS Atta	80		1	
22	ESS Atta	80		1	
23	ESS Atta	80		1	
24	ESS Atta	80		1	
25	PENETRATION ATTA	80		1	
26	PENETRATION ATTA	80		1	
27	PENETRATION ATTA	80		1	

WPS See Weldlist	Design Temperature 50degC	Tightening Torque For Flange Joints TBN	P&ID Drawing Number ESS-0060416	General Layout Drawing Number TBN	Calculation Report ESS-0058702	Inspection Plan TBN	Area Code G01-NCL
Quality Level For Weldign Acc To TBN	Design Pressure 10bar (g)	Bend Radius N/A	Bending Procedure N/A	Coupling Installation Procedure TBN	Pressure Test Program TBN	Alternate System Tag	Date (First Issue) 170522
Weld Joint Efficiency Factor (Longitudinal) 1,0	Test Pressure 14.3bar (g)	Insulation Specification N/A			Title/Name EUROPEAN SPALLATION SOURCE ERIC WATER COOLING SYSTEM CWM DIW SUPPLY FOR FEB ESS.ACC.E02.E03.WP0006		Scale -
Elevation (z) Acc To BCS	Quality Class MQC4-C	Insulation Thickness N/A					Format A2
	Media CWM	Allowance For Corrosion 0					Sheet 1 of 1
	Pipe Specification MQC4-W-PN16	Surface Treatment N/A					Revision A1
Rev A1	Description ISSUED FOR CDR	Date 170522	Drawn FRPE	Designed FRPE	Reviewed AKCO	Verified ANLU	Quality Approved